

Project No : 0051-03
Project Title: “StarBright” --- a Domestic Violence Neighborhood Watch Initiative
Name of Organization : Harmony House
Grant Approved : \$700,000

Executive Summary

Project Belief and Vision

We believe that the burden and responsibility of protecting families with history of domestic violence should not be laid squarely on the victims - by and large women and children. To allow a community to be unsafe for one person, one family, we are also allowing the community to become unsafe for everyone.

We believe that the energy to cultivate a sense of belonging, a sense of neighborhood, a sense of mutual support and responsibility should be generated within the community and by the community. IT is only with this self generated force, like Stars in our universe, that Brightness and harmony be sustained.

Our vision of the Stars in this project will be:

- Women who are survivors of domestic violence
They will shine by transforming themselves from service recipients to service providers. They will be a core energy source, bestowing upon other stars their strength, courage and commitment.
- Parents and teachers and schools
They will be the companion stars, forging a powerful network to detect families at risk of domestic violence, to support and provide light to these families and to nurture them to become future stars.
- Community organizations and businesses
They are the shooting stars. They will shine by revitalizing resources and injecting new energy and ideas into the system. Together with the other stars, they will be charged with promulgating harmonious relationships, a mutual support neighborhood and a violence free community to other systems in our universe.

Duration

From 1st May 2004 to 30th April 2007

Target Groups

Battered women, schools, parent teacher associations, women organizations, community agencies and business corporations.

Location

Tin Shui Wai

Objectives

1. To empower battered women in Tin Shui Wai to strive through adversities and regain confidence by assisting other families.
2. To encourage participation by different sectors in the community in creating a violence free community.
3. To promote mutual care and assistance in the Tin Shui Wai neighborhood.

Brief Description of the Project

The project is divided into various stages:-

1. Recruit and train StarBright Volunteers

Volunteers from the Tin Shui Wai neighborhood will be recruited and trained. They will provide supportive services to families at risk of domestic violence through telephone, home visits and escorting services.

2. Establishment of Detection Network in school

Teachers and parents of associations will be trained to identify students who are affected by domestic violence. They will work in partnership with other StarBright volunteers to provide support to families and battered women. The latter will in turn be recruited to serve other families.

3. Establishment of the StarBright Advisory Committee

Members of this Committee will include StarBright Volunteers, representatives from the School Detection Network and battered women who have benefited from the Project. They will work closely to plan the activities and programmes of the project and ensure that the network will sustain.

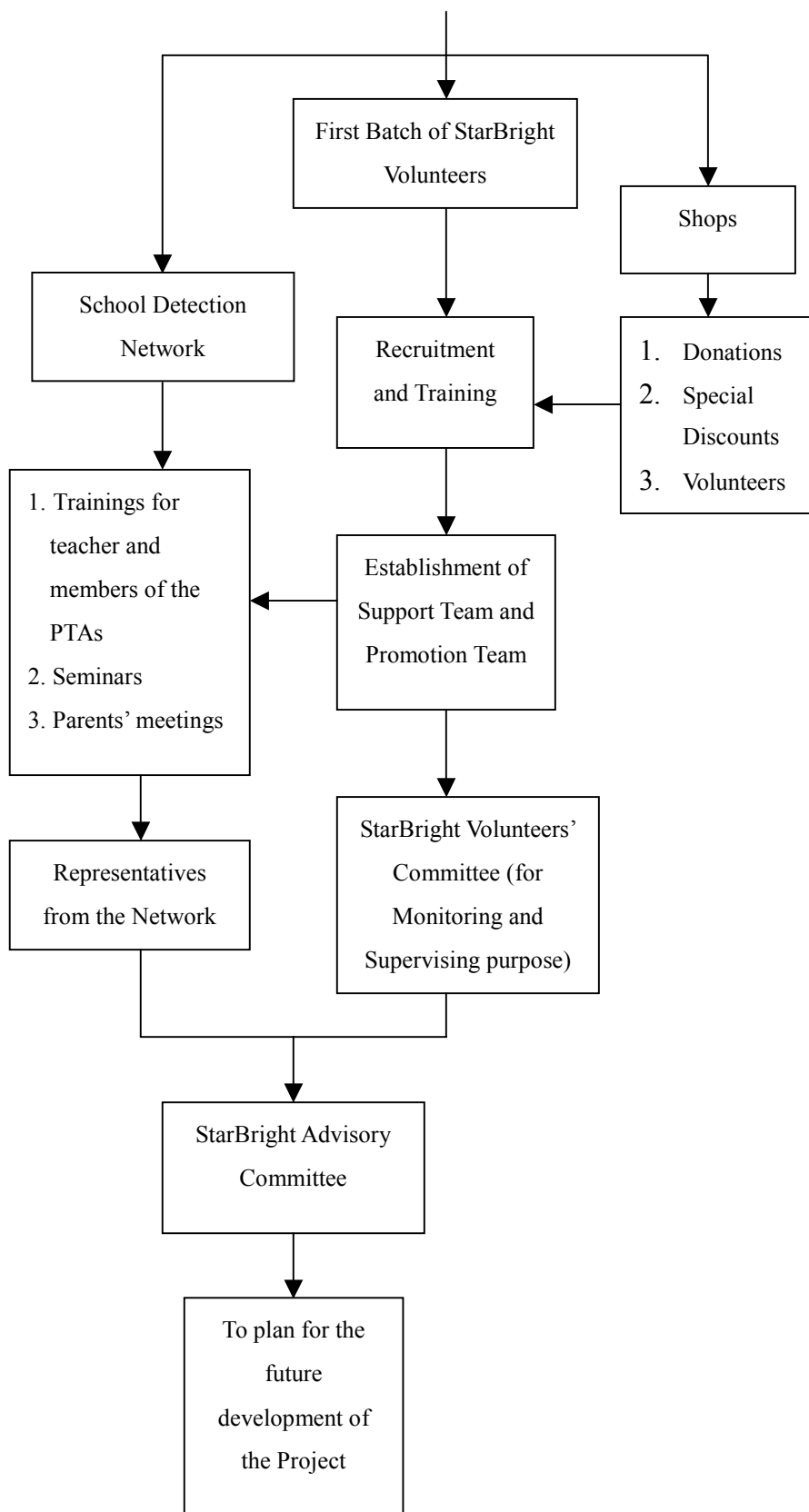
4. Participation of the business sector

The business sector will be encouraged to participate in the Project by (i) encouraging their staff to become volunteers; (ii) giving special discounts to the

participants of the Project or (iii) Acknowledging their pledge to support the neighborhood programme (e.g. by sticking a label in their shops).

Blueprint of StarBright

StarBright Advisory Working Group (Preliminary)
--



Remarks

(1) Invite interested agencies and parties to join the Working Group to prepare for the commencement of the Project.

(2) Two recruitments will be arranged very year

(3) Trained StarBright Volunteers will assist the establishment of the School Detection Network.

(4) Regular meetings will be held by the Advisory Committee in relation to the development of the Project.

Outcome and Effectiveness of the Project

Outcome:

StarBright will enhance the social capital of Tin Shui Wai through:-

1. Community Participation

- * Public awareness of the problem of domestic violence will be raised.
- * People in the community will be highly motivated to take part in voluntary work.

2. Community Cohesiveness, Harmony and Mutual Support

- * Cooperation between organizations of different sectors will be facilitated and the sense of belonging in the community will be reinforced.
- * Development of trust and mutual dependency between battered women and the neighborhood.
- * Enhancement of support network within the community and strengthen the ability of the community to resolve problems and conflicts.

3. Positive Values

- * A strong sense of neighborhood will be cultivated and members of the community will be confident that together, as a community, they will strive through adversities.

Effectiveness:

Community Participation	Method of Assessment	Indicator
Kindergarten	Ascertain the number of kindergartens participating in the School Detection Network	10 Kindergartens
Primary Schools	Ascertain the number of primary schools participating in the School Detection Network	10 Primary Schools
Secondary Schools	Ascertain the number of secondary schools participating in the School Detection Network	10 Secondary Schools
Participating Teaching Staff	Ascertain the number of teaching staff members participating in workshops, seminars, forums and meetings	2400 people
Participating Students	Ascertain the number of students participating in workshops, seminars,	2400 people

	promotions and voluntary work	
Participating Parents	Ascertain the number of parents participating in workshops, seminars, promotions and voluntary work	2400 people
StarBright Volunteers	Ascertain the number of people participating in the training programs, workshops, voluntary work and promotional activities	360 people
Battered Women	Ascertain the number of battered women joining the Project	180 women
Community Cohesiveness, Harmony and Mutual Support		
1. <u>Schools</u> Understanding of family violence and attitudes towards the same	Questionnaires to be distributed before and after various activities (Paired Sample T-test)	70% of the participants would have their knowledge improved and change their attitudes towards family violence positively
2. <u>StarBright Volunteers</u> Understanding of family violence, attitudes towards the same and the ability to solve problems	Questionnaires to be distributed before and after various activities (Paired Sample T-test)	70% of the Volunteers would have their knowledge and ability to solve problems improved and change their attitudes towards family violence positively
3. <u>Battered Women</u> Becoming a StarBright Volunteer	Conduct related surveys	30% of the battered women would become StarBright Volunteers
Development of Trust and		

Networking		
Trust of the battered women and the neighborhood	Statistics : (i) Number of women who have contacted the Volunteers (ii) Number of women who have called when violence occurs (iii) Times of emotional support via telephone, home visit. (iv) Number of escorting services provided	80% of them would contact the Volunteers 80% of them would call for our help At least 2 times of emotional support per woman 80% of them would need this service
1. Assessment of the quality of the volunteer and our services, sense of belonging and security by battered women	Social Support Appraisals Scale by Alan Vaux, Jeffrey Phillips, Loris Holley	≥38 Marks
Positive Values		
Schools: PTAs and Students	Questionnaires to be distributed before and after various activities (Paired Sample T-test)	70% of the participants would have their knowledge improved and change their attitudes towards family violence positively
StarBright Volunteer	Questionnaires to be distributed before and after various activities (Paired Sample T-test)	70% of the Volunteers would have their knowledge and ability to solve problems improved and change their attitudes towards family violence positively
Battered Women	Assessment according to Jody Brown (1998) "The Process of Change in	60% of them would feel that their ability to deal

	Abused Women Scales (PROCAWS)	with the problem of family violence has been improved
	Conduct surveys as to the number of battered women that have become StarBright Volunteers	30% of them would take up the role of a Guardian Star Volunteer